



Run  
your fleet  
more efficiently  
with reduced  
emissions

**Bi-fuel** Solutions



# Smart energy control solutions leading the way to energy sustainability

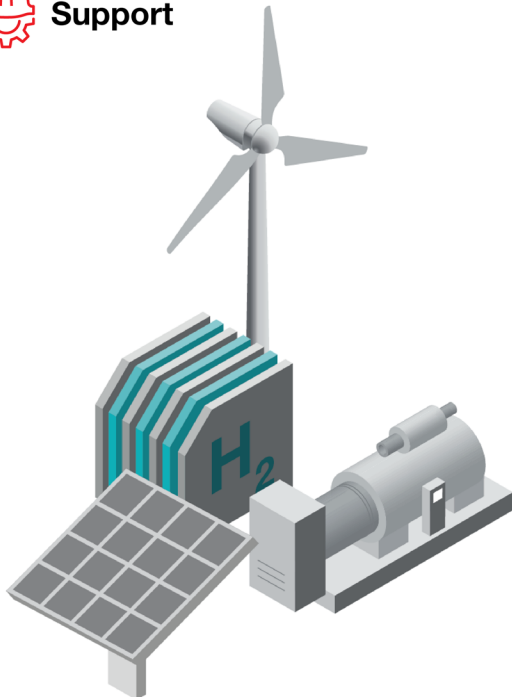
We design and deliver innovative control solutions and services for smart, sustainable energy generation and management across all applications and industries.

 **Consulting**

 **Design**

 **Commissioning**

 **Support**



Flexible Operations

- > **Complete control of bi-fuel systems**
- > **Reduced costs and emissions**
- > **Fuel flexibility**



Bi-fuel & Hydrogen  
Solutions

## Bi-Fuel: Diesel + Hydrogen

Conversion of any original diesel engine to operate on a mixture of diesel and hydrogen for combustion.

## Tri-Fuel: Natural Gas + Hydrogen

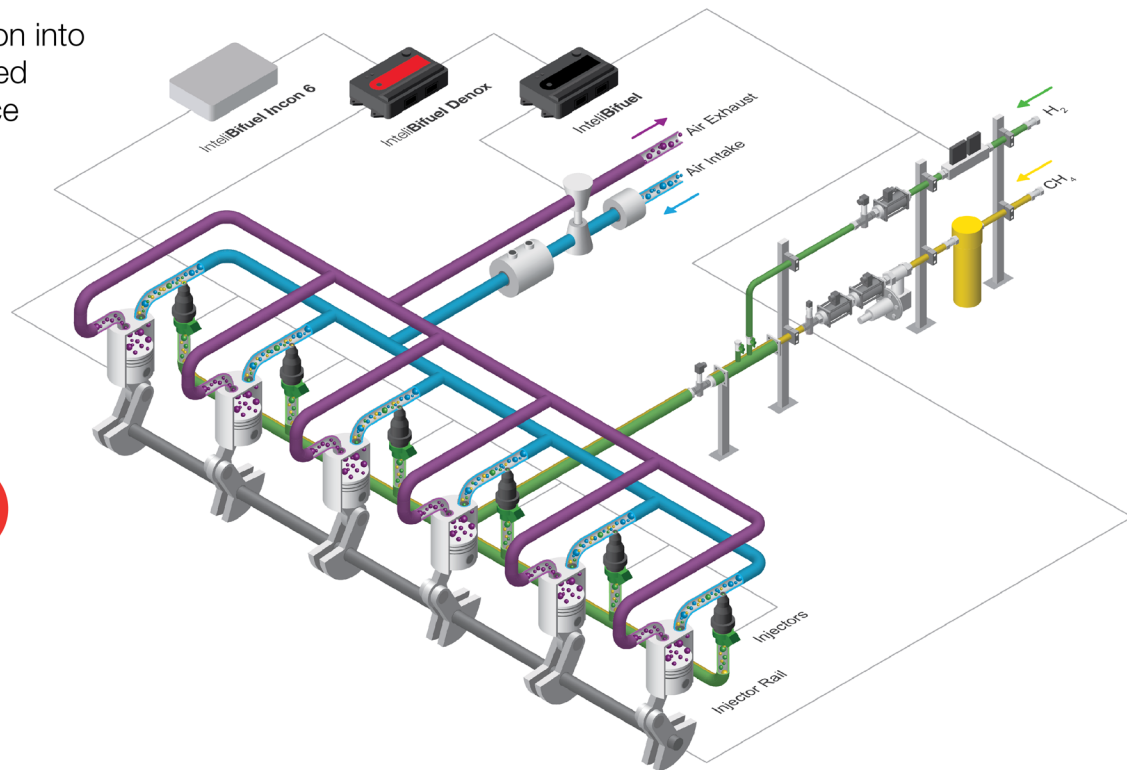
Substituting diesel with a combination of hydrogen and natural gas helps reduce emissions and lower operating expenses.

## Gas Engine Conversion to Hydrogen

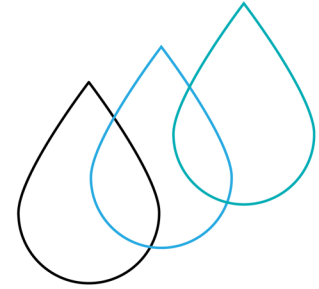
Replacing fuel in gas engines to operate on up to 100% hydrogen.

## Bi-Fuel: Diesel + Natural Gas

Precision gas integration into diesel engines, designed for optimal performance across low, medium, and high-speed applications.



High  
Pressure  
Multiple Point  
Injection



# Outstanding injection options for all engine types and applications

## High-Pressure Single-Point Injection for High-Speed Engines

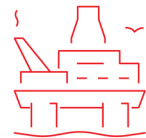
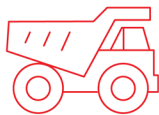
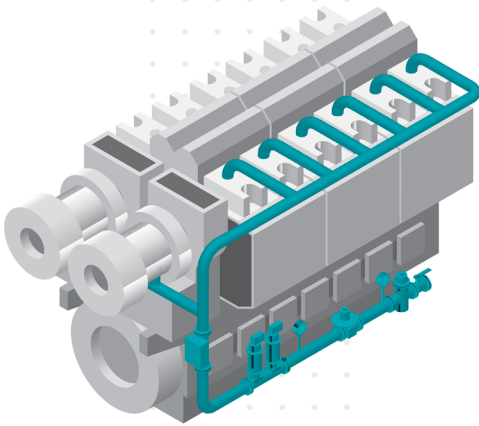
A cost-effective solution that enables the ComAp controller to manage fuel distribution across cylinders with high precision, safety, and efficiency.

## High-Pressure Multi-Point Injection for All Engine Types

An area where ComAp stands out, this type of injection gives you greater control over individual cylinders and helps you to reduce the risk of methane slip.

## Low-Pressure Fumigation for High-Speed Engines

A reliable and widely adopted system, ideal for applications where high-pressure injection is not suitable.



Application Areas

**Gen-sets** | **Mining Trucks** | **Fracking Pumps** | **Locomotives** | **Marine** | **Gas Engines**



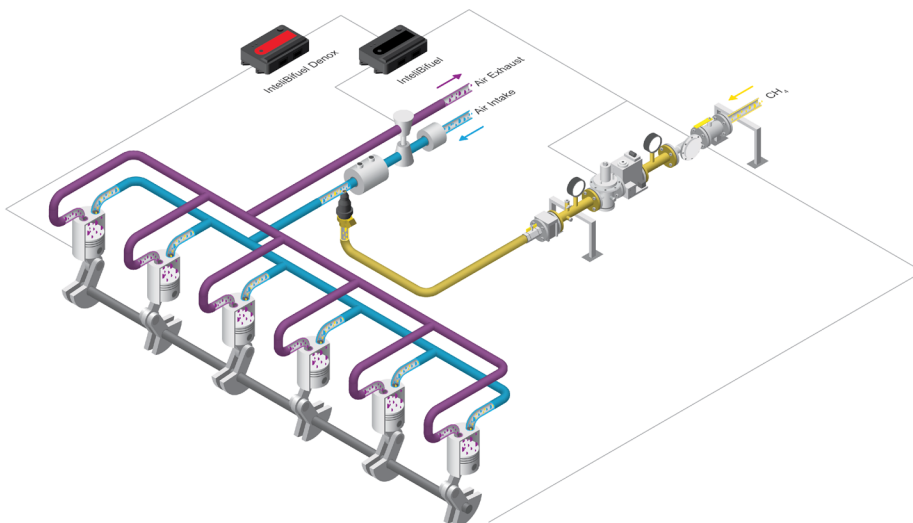
## Manage your fleet securely from anywhere in the world

Get a comprehensive overview of the status of your devices, their exact location and all important data with ComAp's WebSupervisor via your PC or mobile device.



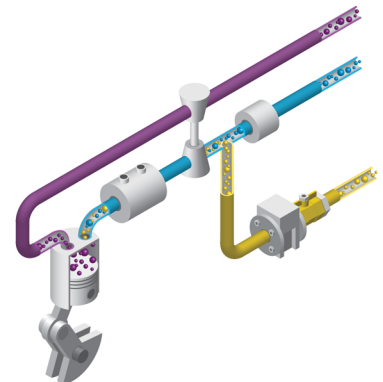
### High Pressure

Single Point Injection



### Low Pressure

Fumigation



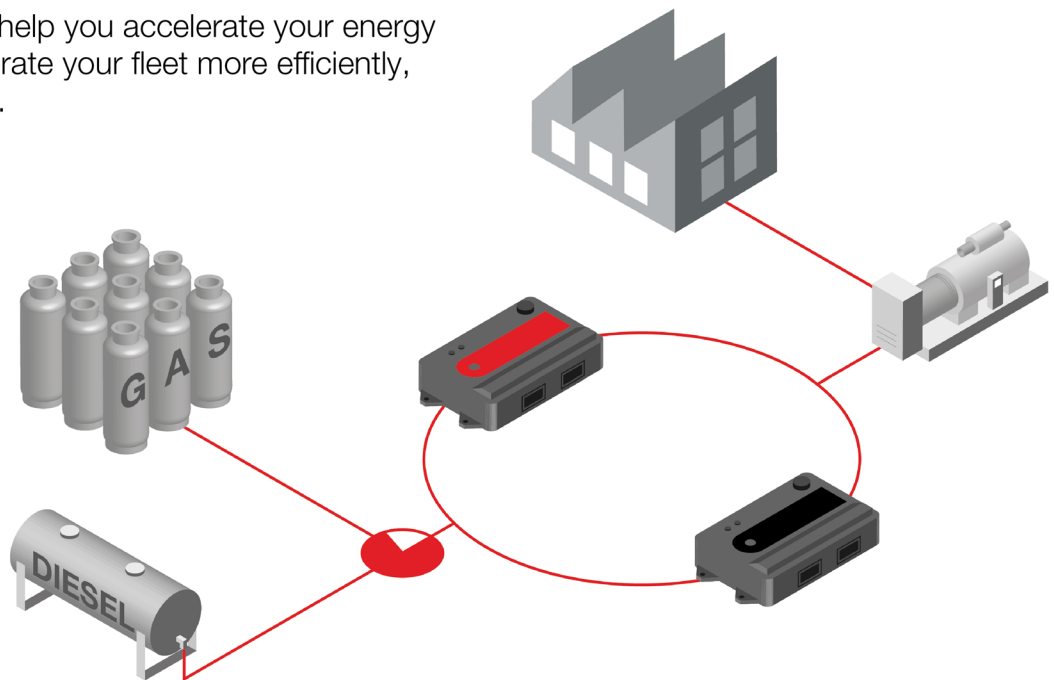
[comap-control.com](http://comap-control.com)

# Optimise your fleet's performance and environmental footprint with bi-fuel technology

Convert your diesel engine to run on natural gas and/or hydrogen with one of the most advanced technologies on the market.

ComAp's solution will help you accelerate your energy transition journey, operate your fleet more efficiently, and reduce emissions.

Save  
up to 70%  
on diesel  
costs



ComAp in Numbers

**550+** employees worldwide

**26** offices globally

**70+** distributors

**[comap-control.com](https://comap-control.com)**