



**A complete fleet
overview from
anywhere**

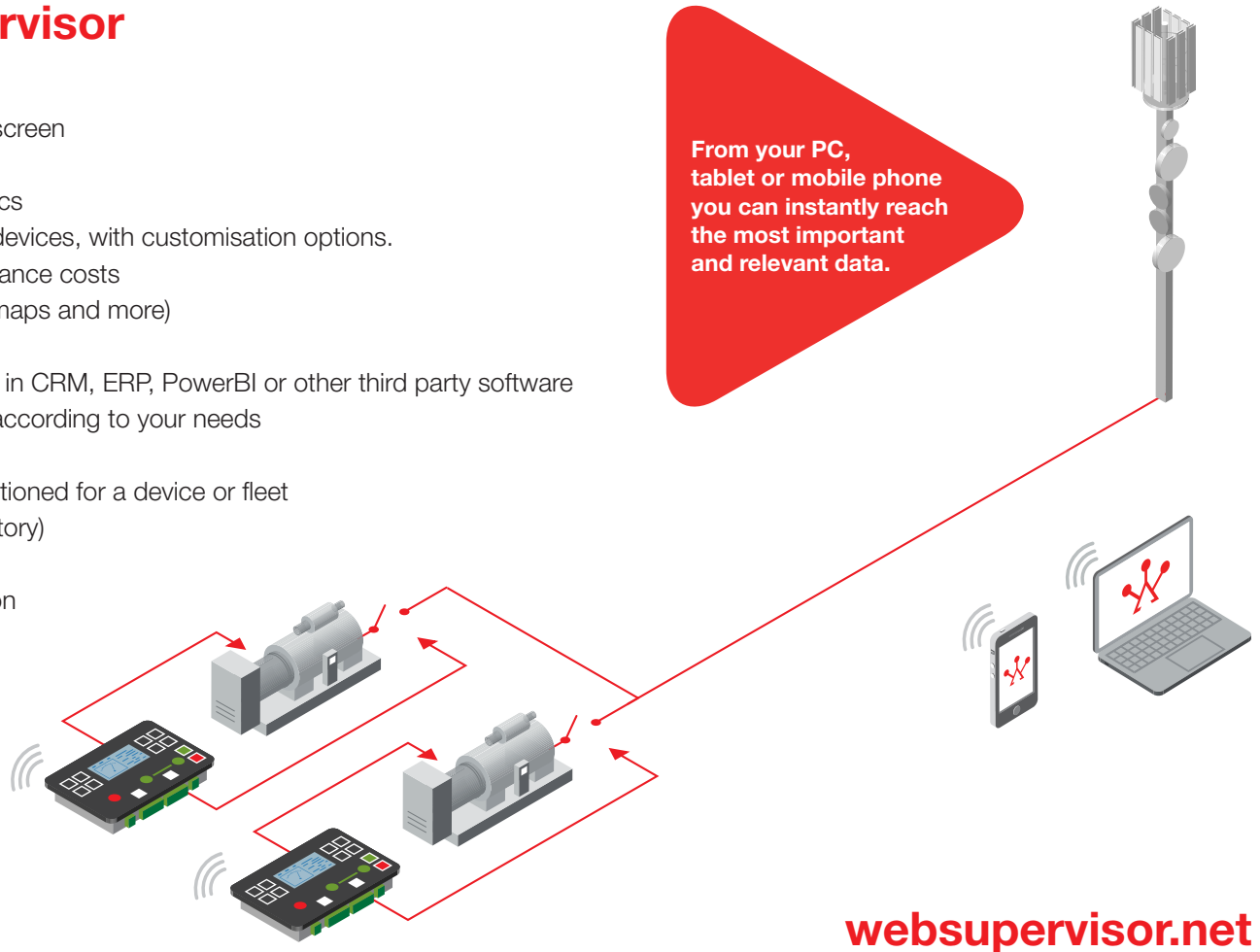


A Cloud-based application that enables remote monitoring, management and analysing of a gen-set fleet and 3rd party devices from anywhere.

Main Features of WebSupervisor

- > List and Map views of devices and alerts on one screen
- > Device tracking and geofencing*
- > Dashboard with fleet and group of devices statistics
- > Automatic reports for each device, or a group of devices, with customisation options.
- > Alarm Analyser which can help to reduce maintenance costs
- > Advanced trend representation (bargraphs, heat maps and more)
- > 3rd party device monitoring
- > API – possibility to data download and integration in CRM, ERP, PowerBI or other third party software
- > Screen Editor - modify the data that is displayed according to your needs
- > Support of web camera
- > User activity logger - logs all activity a user has actioned for a device or fleet
- > Download controller's history file (event-based history)
- > Customizable look with your logo and URL
- > User management with several levels of permission

From your PC,
tablet or mobile phone
you can instantly reach
the most important
and relevant data.



websupervisor.net



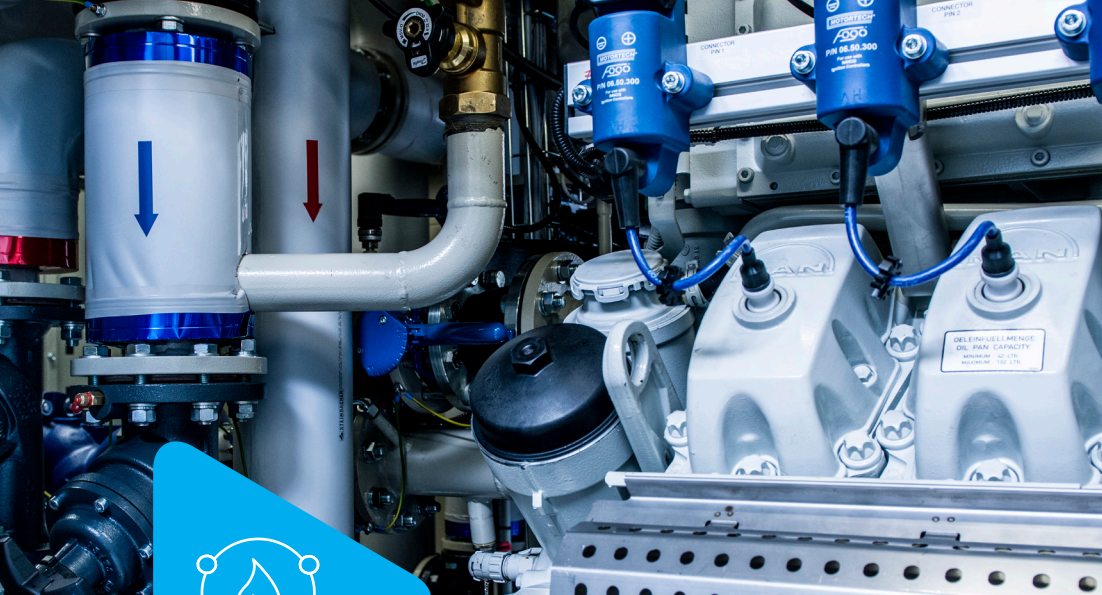
Rental & Packagers

Real-time GPS monitoring, fuel-level alarms and detailed usage data can all allow rental fleet operators to maximise revenue.

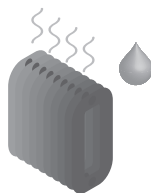


Renewable Energy

Our customers can get the most out of their clean energy. WebSupervisor helps to save even more fuel and decrease CO2.



CHP



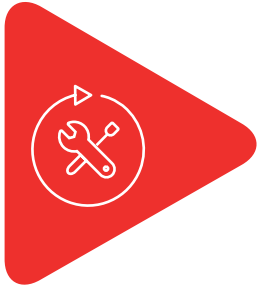
The many reporting and management tools within WebSupervisor allow operators to ensure that each cogeneration plant is operating at peak efficiency and generating the most revenue possible.



Telecom



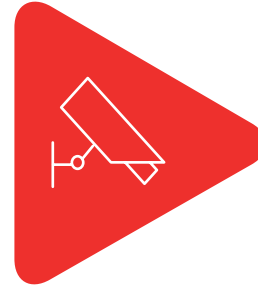
The analysis, reporting and monitoring features allow operators to ensure that their towers are all operating within operational parameters.



Reduce your maintenance costs and increase gen-set up-time

The Alarm analyser evaluates gen-set alarms for a selected period and shows the result in a report.

The Alarm Report shows what kind of alarms occurred, the number of occurrences, and the alarm duration. This allows a user to monitor frequent alarms with a particular device and reduce or prevent potential maintenance costs due to device issues.



Customer's data is secure with WebSupervisor

WebSupervisor is hosted at Microsoft Azure platform. WebSupervisor passed security audit. User management with several categories of permissions allow combine the permission and set permission according to individual needs. Administrators of the account can see the history logs of every user, so they can monitor user's actions, which leads to increased security and surveillance.





websupervisor.net